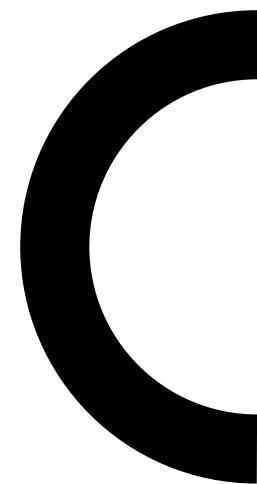


METROPOLE ROUEN NORMANDIE



GENERAL PRESENTATION OF THE METROPOLE ROUEN NORMANDIE

International Solidarity Department : May 7th , 2025



Preamble



As the 4th largest metropolis in France in terms of the number of member municipalities (71), the 2nd largest public investor and the main economic driver in Normandy with **a budget of almost 1 billion euros**, our territory occupies a **key position on the Seine axis**, the development corridor linking Paris to the estuary. Looking to the future, our Métropole Rouen Normandie (MRN) is now at the heart of an extremely strong economic dynamic and is positioning itself **as a pioneer in the social-ecological transition.**

TABLE OF CONTENTS

- **01. What is a Metropolis?**
- **02. Organisation of the Métropole Rouen Normandie**
- **03. Geographical location of the MRN**
- **04. Competences of the MRN**
- **05. Attractiveness of the Metropolitan area**



1. What is a Metropolis?



According to the Law*:

« The Metropolis is a public establishment for inter-municipal cooperation (EPCI) with its own tax system, bringing together several communes in a single area without an enclave within an area of solidarity to draw up and lead together a project for the planning and economic, ecological, educational, cultural and social development of their territory in order to improve its cohesion and competitiveness and to contribute to the sustainable and mutually supportive development of the regional territory ».

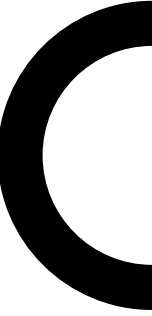
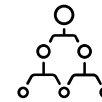
**Law n° 2014-58 of 27 January 2014 on the modernisation of territorial public action and the affirmation of metropolises, known as the 'MAPAM Law' or 'MAPTAM Law'*

Head office of
the Métropole
Rouen
Normandie :

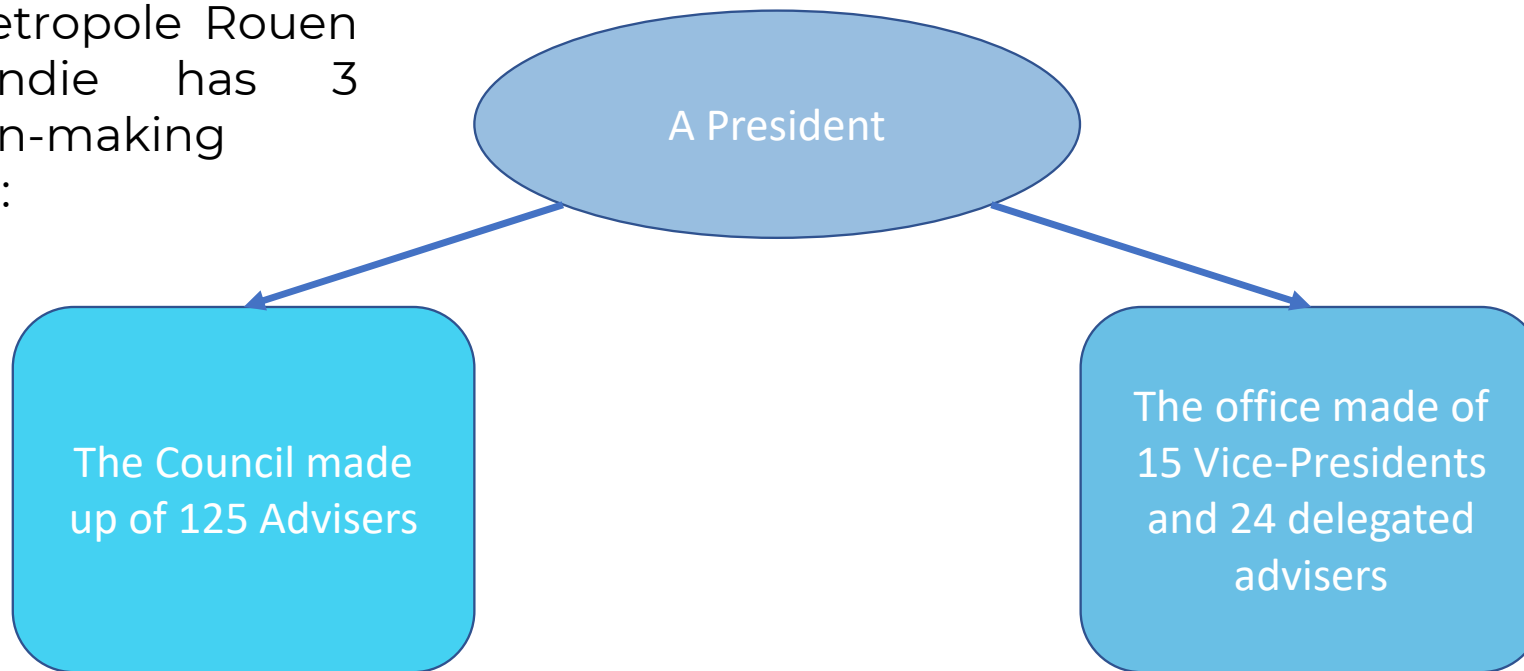


Picture credit : Alan AUBRY, Métropole Rouen Normandie

2. Organisation of the Metropole Rouen Normandie (MRN)



→ The Metropole Rouen Normandie has 3 decision-making bodies :





Nicolas MAYER-ROSSIGNOL

President

**24 delegated
advisers**

**15 Vice-
presidents**

Of which

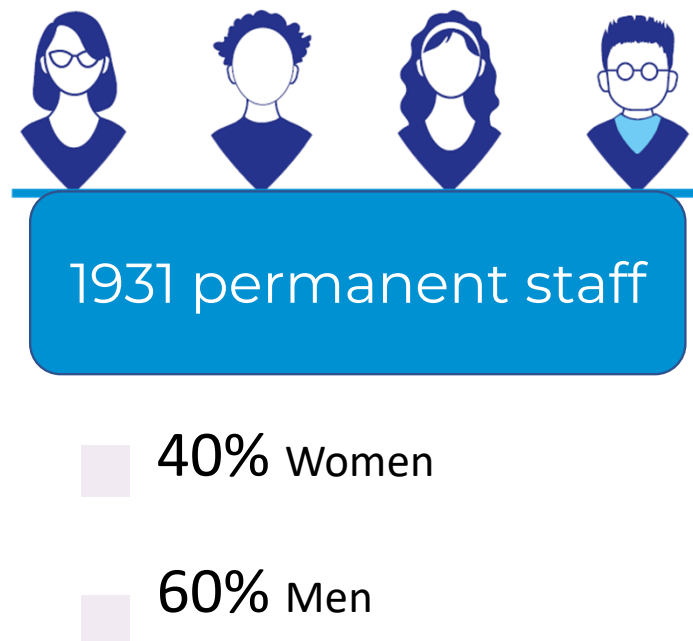


Abdelkrim MARCHANI

12th Vice-President; on charge of the economy, attractiveness, higher education and research, student life, digital technology - **Europe and international**

Source : <https://www.metropole-rouen-normandie.fr>

Composition of the MRN's staff :

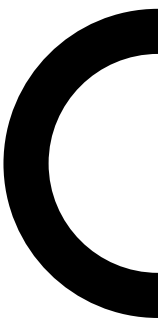


Figures from RSU and BDSE 2022

3. MRN's Geographical location



Picture credit : Alan AUBRY, Métropole Rouen Normandie

- 
- ➡ 71 Municipalities (« communes » in French)
 - ➡ An area of 724 square kilometers
 - ➡ Around 500 000 inhabitants
 - ➡ 1 900 kilometers of roadways
 - ➡ 49 kilometers of cycle paths
 - ➡ 600 kilometers dedicated to public transport (bus, tram)

The map illustrates the Rouen metropolitan area and its surrounding regions. The Seine river is a central feature, flowing through the city and its suburbs. The map includes numerous place names, such as Épinau-sur-Duclair, Saint-Paër, Sainte-Marguerite-sur-Duclair, Duclair, Saint-Pierre-de-Varengueville, Hénouville, Le Trait, Yainville, Jumièges, Le Mesnil-sous-Jumièges, Bardouville, Anneville-Ambourville, Yville-sur-Seine, Saint-Martin-de-Boscherville, Cantéleu, Quevillon, Saint-Pierre-de-Manneville, Val-de-la-Haye, Sahurs, Hautot-sur-Seine, La Bouille, Moulineaux, La Londe, Orival, Saint-Aubin-lès-Elbeuf, Caudebec-lès-Elbeuf, Elbeuf, Saint-Pierre-lès-Elbeuf, Freuse, Cléon, Tourville-la-Rivière, Oissel, Grand-Couronne, Petit-Couronne, Grand-Quevilly, Petit-Quevilly, Bonsecours, Le Mesnil-Esnard, Amfreville-la-Mivoie, Franqueville-Saint-Pierre, Montmain, N14, La Neuville-Chant-d'Oisel, Quévreville-la-Potière, Ymare, Les Authieux-sur-le-Port-Saint-Ouen, Sotteville-sous-le-Val, Gouy, Saint-Aubin-Celloville, Boos, Saint-Léger-du-Bourg-Denis, Saint-Aubin-Epinay, Darnétal, Saint-Jacques-sur-Darnétal, Roncherolles-sur-le-Vivier, Saint-Martin-du-Vivier, Bois-Guillaume, Mont-Saint-Aignan, Deville-lès-Rouen, Maromme, Notre-Dame-de-Bondeville, Le Houllme, Malaunay, Houppeville, Isneauville, Fontaine-sous-Préaux, and D43. The map also shows major roads like D92, D43, D15, N14, and A28. The map is color-coded with green for forests and orange for urban areas.

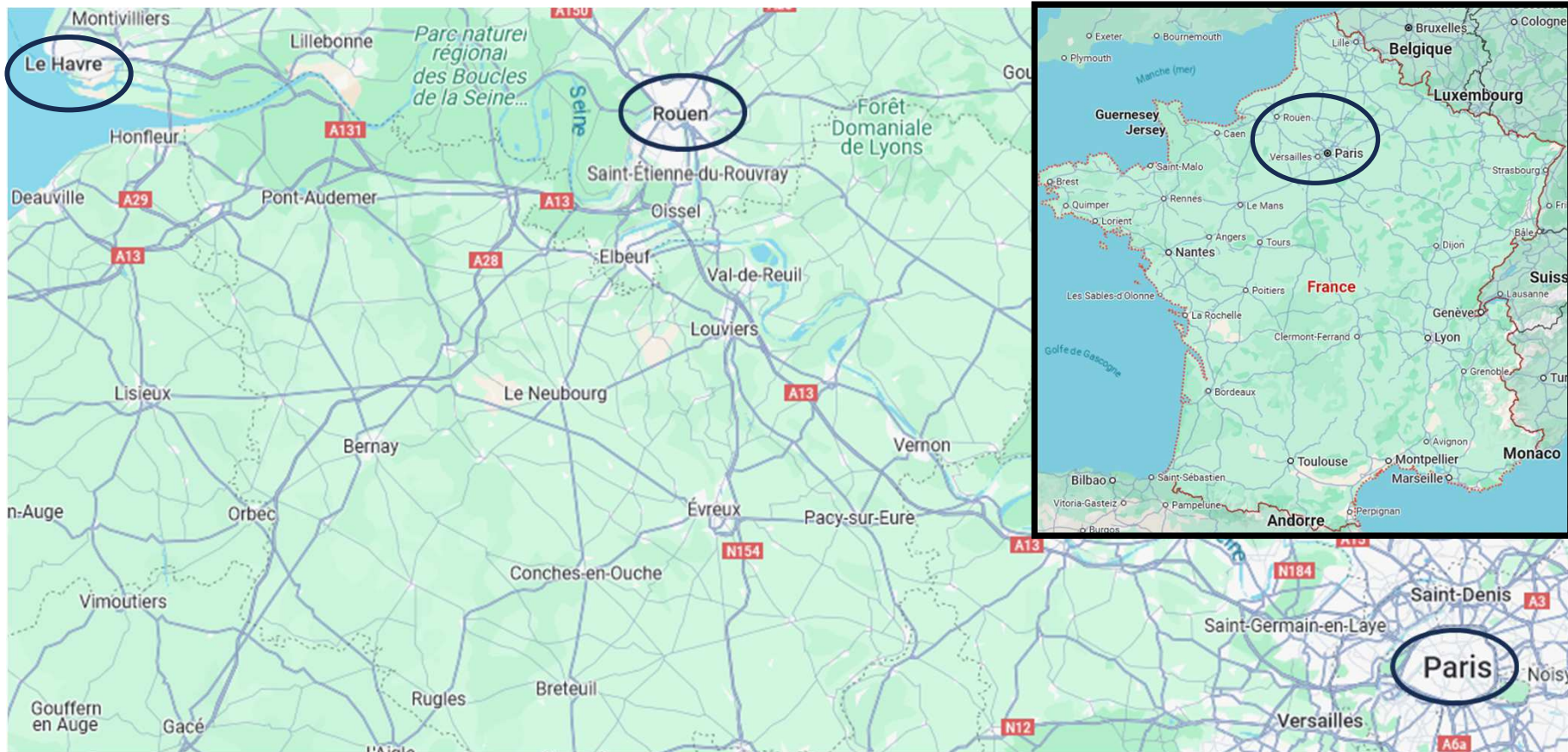
C

**A territory
shared in 3
areas:**

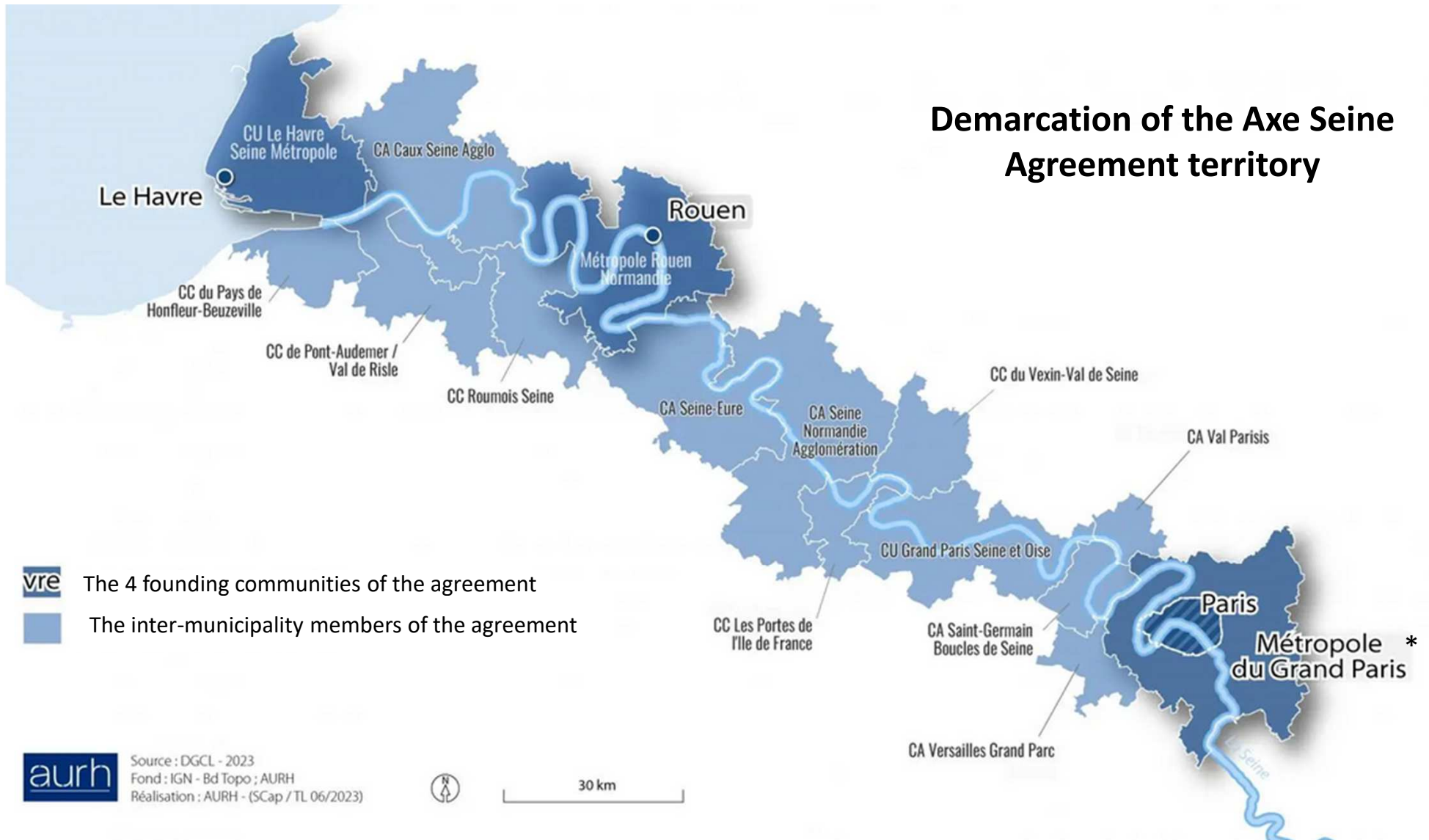


Source : <https://www.metropole-rouen-normandie.fr>

The Seine axis represents a major strategic challenge for MRN, providing a direct economic, commercial and industrial link with the Greater* Paris metropolitan area, the City of Paris and Le Havre Seine Metropolis urban community.



Demarcation of the Axe Seine Agreement territory



4. Competences of the Metropole Rouen Normandie



Public and general interest services: a strengthened public transport network, high-quality water at a reasonable price, regular upgrading of wastewater treatment facilities, an efficient and environmentally-friendly waste policy, public energy distribution.

Economic development and attractiveness of the region: creation and maintenance of business parks to make it easier for companies to locate here.

Cultural activities for all: large-scale facilities to develop cultural activities accessible to as many people as possible, and the organization of cultural events of national and international renown.

Spatial planning: maintenance and management of the community's road network, preparation of a territorial coherence plan and a local housing plan.

Ecological development: protection and enhancement of natural areas, environmental education.

Greater solidarity: support in finding a job, easier access to housing.



5. Attractiveness of the Métropole Rouen Normandie



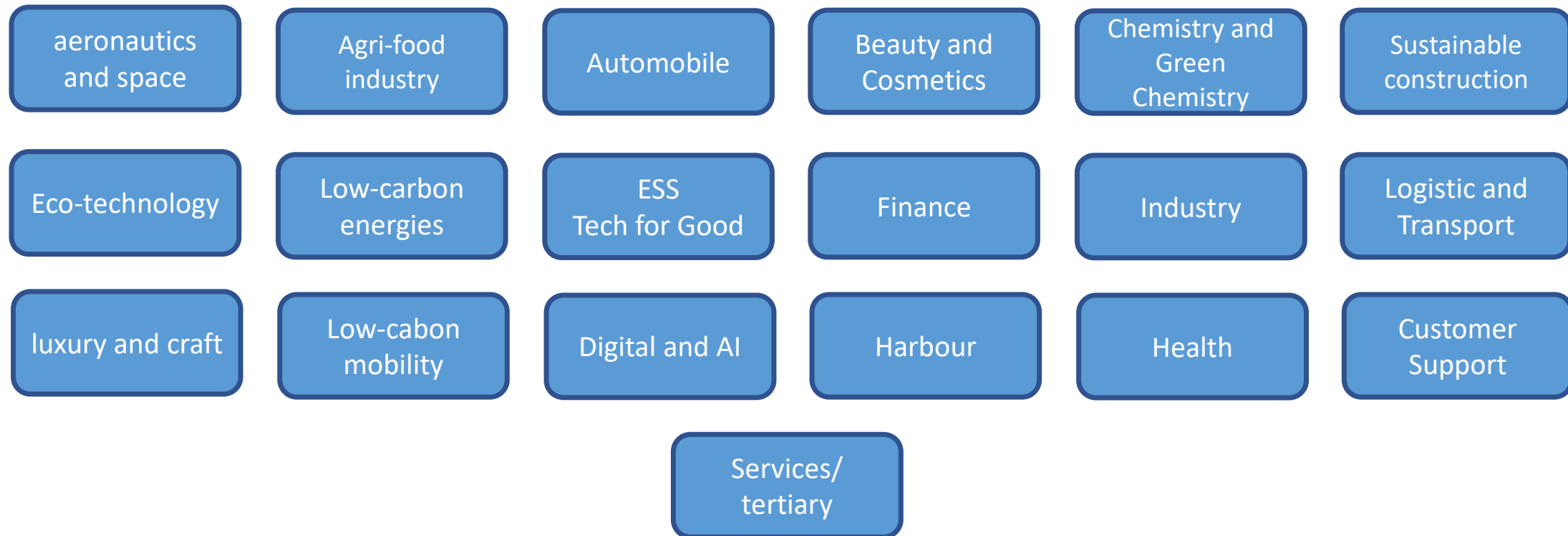
- 01. A national and international economic hub**
- 02. A major center for University research**
- 03. A sports policy that makes a difference**
- 04. A Metropolis with a rich cultural heritage**
- 05. The defence of the social-ecological transition**

01. A national and international economic hub



A diversified economy with a solid base of businesses:

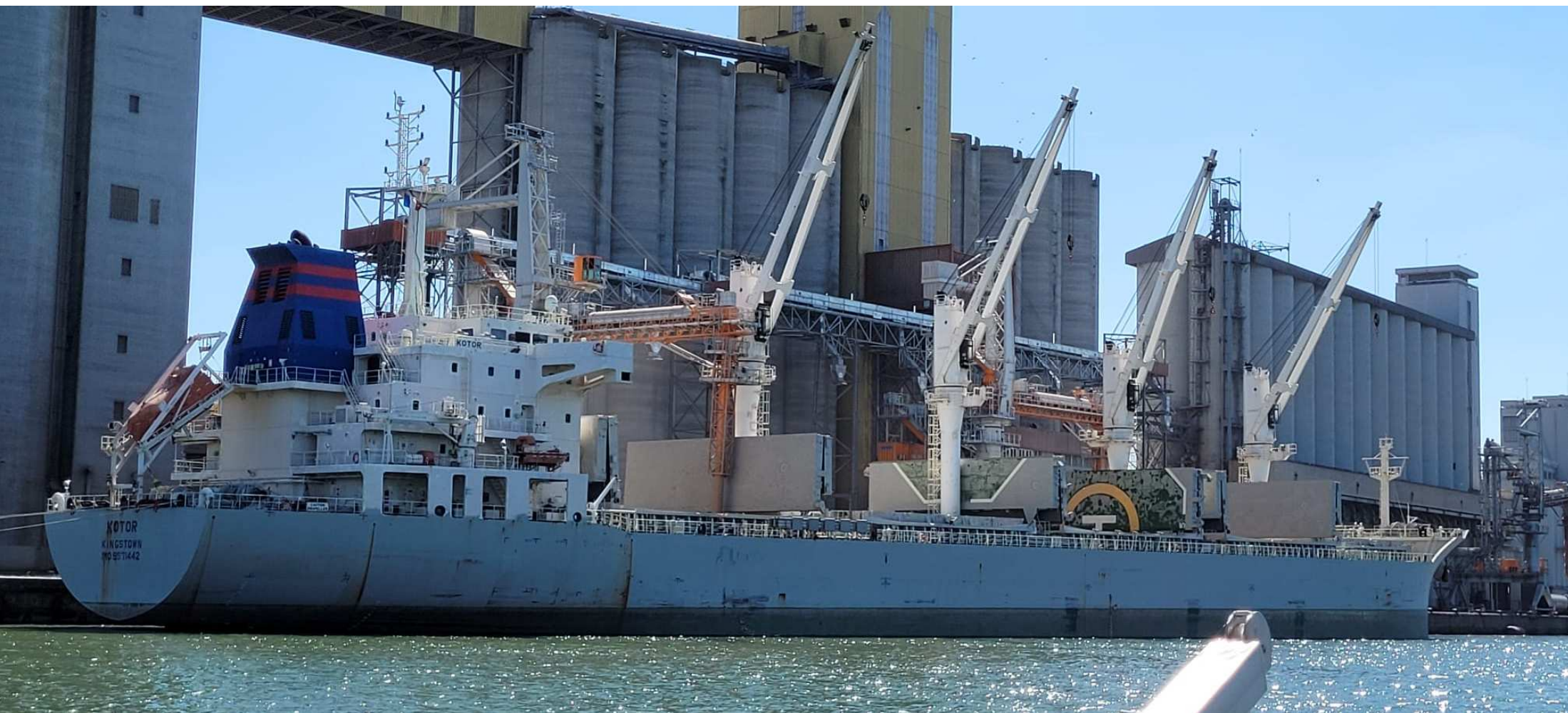
The Metropole Rouen Normandie is performing thanks to 19 centers of excellence →



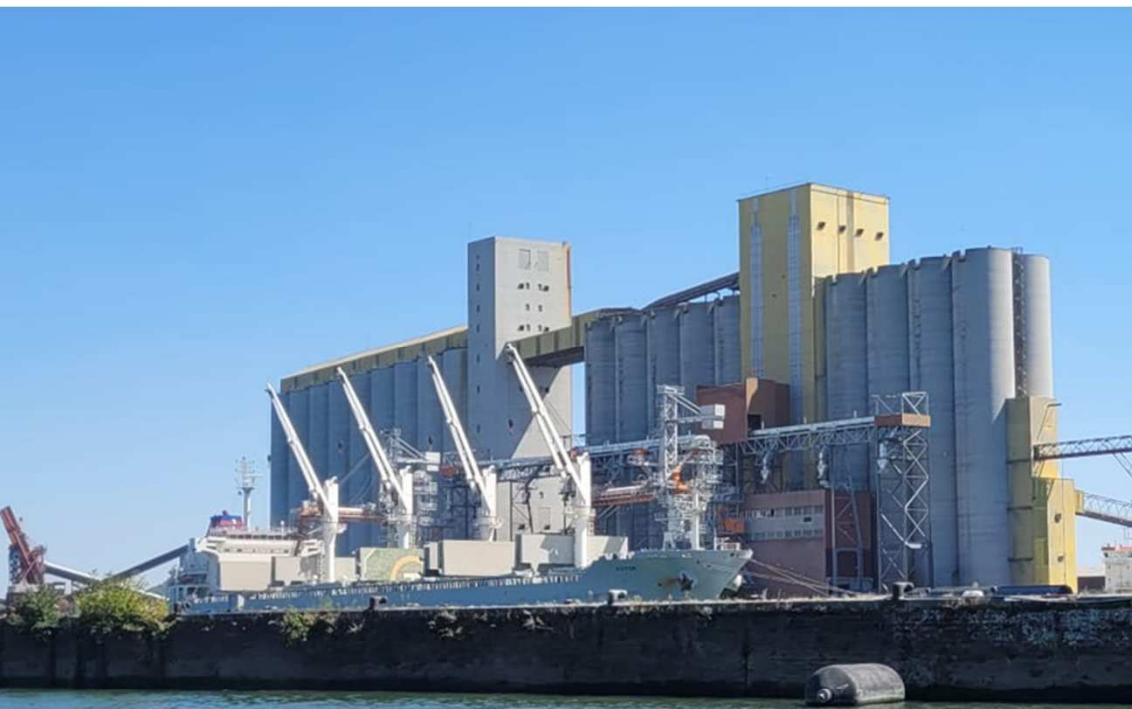
The Harbour as MRN's main commercial activity:

- An active Harbour since Antiquity.
- 2021 : the harbour of Rouen merged with those of Le Havre and Paris, facilitating and strengthening trade, in order to create a new entity called **HAROPA Port**.
- Around 4,000 ships stop over at Rouen every year.
- Its size allows it to accommodate container ships, cargo ships and oil tankers...
- It's the Western Europe's leading cereals harbour thanks to its major exports of cereals worldwide





Picture credit : Carole LE CLEZIO, Métropole Rouen Normandie



Picture credit : Carole LE CLEZIO, Métropole Rouen Normandie



Picture credit : Alan AUBRY, Métropole Rouen Normandie

An area favorable to agricultural development:

- The geological wealth of Normandy makes farming easy.
- The MRN territory is also used for livestock farming (particularly cattle/cow and pigs).
- It's a good land for market gardening arboriculture with the apple harvest.
- The MRN Territory with over a third of its territory taken up by agricultural activity, offers a sample of the multitude of crops that can be grown in Normandy.
- Normandy is the world's leading producer of linen, with the majority of its farms in the Seine-Maritime and Metropolitan areas.

02. A major center for University research

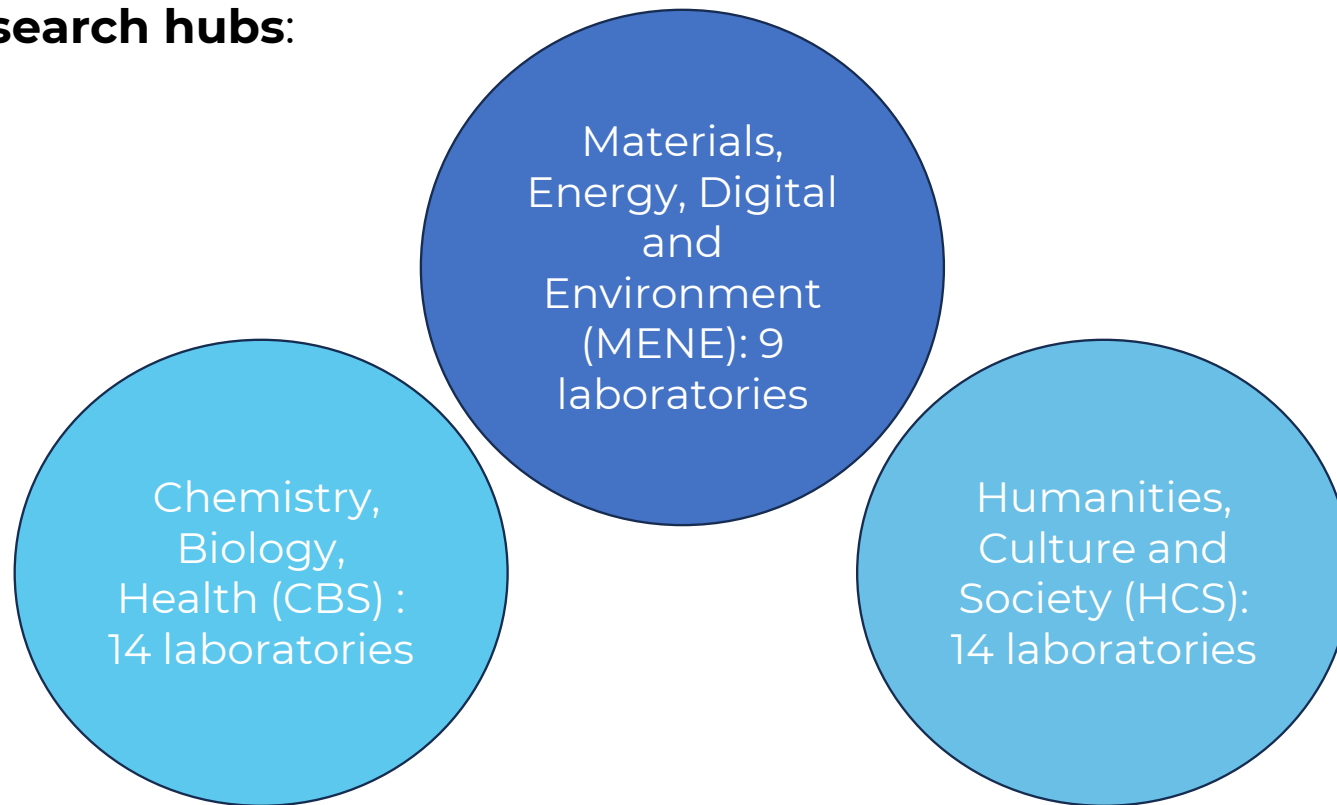


The Métropole Rouen Normandie is a **center of excellence for higher education and research.**

- **Over 50000 students per year** (including 6000 international students).
- **5 campuses:**
 - Health
 - Law, economics and political sciences
 - Humanities and social sciences
 - Engineering and technical sciences (biotechnology, etc.)
 - Multimedia and telecommunications jobs
- **400 different training programmes.**



A real **innovation incubator**
with **4,000 researchers** and
divided into 3 thematic
university research hubs:



The provision of unique technological tools:

- On January 31, 2025, a new piece of equipment was inaugurated at the University of Rouen Normandy. This **unique mass spectrometer**, which is set to change the world of molecular chemistry, was presented to the press and many officials, including the President of the Normandy Region, Hervé MORIN, the Prefect of Normandy, Jean-Benoît ALBERTINI, the President and CEO of the CNRS (National Center for Scientific Research), Antoine PETIT, and the Research and Development Director of Total Energies, Marie-Noëlle SEMERIA.
- More details here: <https://www.univ-rouen.fr/actualites/spectrometre-de-masse-inauguration-dun-equipement-de-pointe-unique-au-monde/>

03. A sports policy that makes a difference



The MRN also shines thanks to its sports policy, which is geared towards the international arena and simplified by the provision of emblematic sports complexes throughout the area.

The KINDARENA:

- In the heart of Rouen's western districts.
- Seating for 4,500 to 6,000 people in a usable area of 14,700 square meter.
- Meets the needs of local clubs, the general public, schools and universities.
- Various disciplines: basketball, gymnastics, martial arts, volleyball, handball, table tennis.
- International events: **the 13th Perche Élite Tour in January 2025.**

Center Guy BOISSIERE:

- The Edith BALLESTER ice rink, home to the Rouen Dragons ice hockey team (17-time French champions and European champions in 2016).
- The Guy BOISSIERE swimming pool, with its Olympic-size pool.

The KINDARENA



Picture credit : Carole LE CLEZIO, Métropole Rouen Normandie

The Edith BALLESTER ice rink, home to the Rouen Dragons



Picture credit : Carole LE CLEZIO, Métropole Rouen Normandie

04. A Metropolis with a rich cultural heritage



The cultural and historical dynamism of the Metropolis is combined with a dynamic tourist industry.



8.91 million tourist overnight stays in the city in 2024.

The city's architectural and historical heritage:

- La cathédrale Notre-Dame de Rouen
- Le Gros-Horloge
- La Tour Jeanne d'Arc
- La Place du Vieux-Marché
- Le Palais de Justice...

Museums and art collections of the RMM (meeting of the city's museums):

- The “Musée des Beaux-Arts” de Rouen, with a collection of paintings, sculptures and art objects, including works by Monet, Courbet and Géricault.
- “Le Secq des Tournelles” Museum: a unique museum devoted to ironwork and antique metal objects.
- Historial “Jeanne d'Arc”: Interactive museum retracing the life of Joan of Arc.

Notre-Dame Cathedral of Rouen

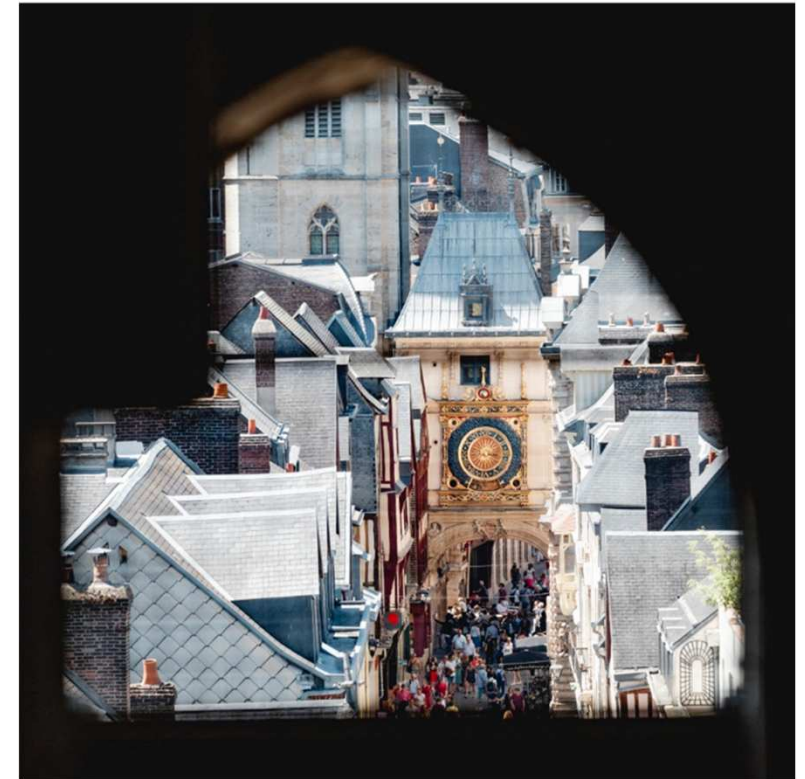


Picture credit : Alan AUBRY, Métropole Rouen Normandie

**Place du Vieux Marché Old Market Square
Eglise Sainte-Jeanne-d 'Arc : Church of
Saint Joan of Arc**



**Gros Horloge de Rouen :
Big Clock of Rouen**



Picture credit : Alan AUBRY, Métropole Rouen Normandie

The Secq des Tournelles Museum

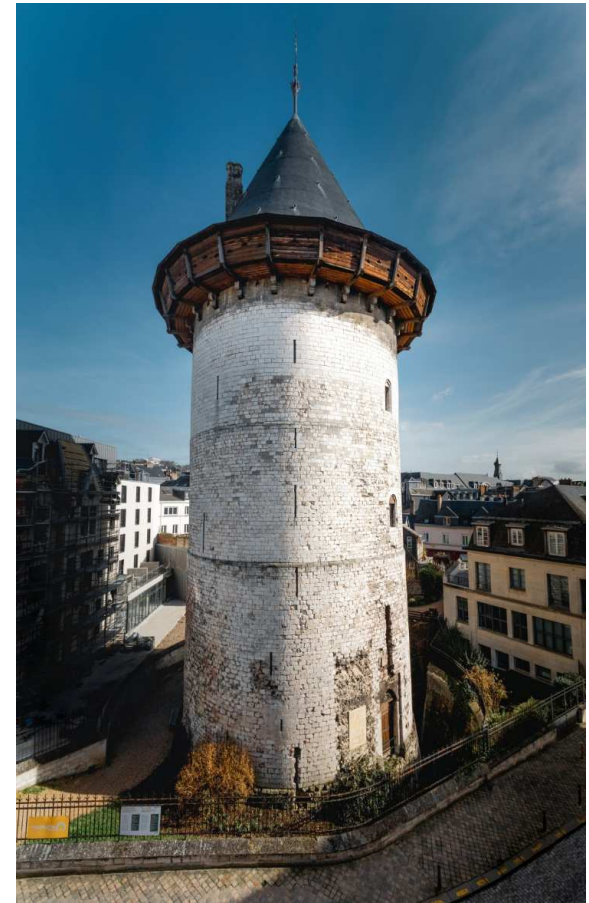


The Mueum of Fine Arts



*Picture credit : Alan AUBRY, Métropole Rouen
Normandie*

The Joan of Arc Tower



Events and celebrations :

- The Normandy Impressionist Festival is an event celebrating Impressionist artists and the heritage of Claude MONET.
- Les Fêtes Jeanne d'Arc or Joan of Arc Festival : annual festival celebrating Joan of Arc, with historical re-enactments and parades.
- "L'Armada": a large gathering of international boats that takes place every 4 years on the docks of the Seine in a festive atmosphere of sharing.

green spaces and promenades:

- The docks of the Seine.
- "Jardin des Plantes": a magnificent botanical garden that also offers cultural and educational activities.

Theatre and music:

- "Le Théâtre des Arts". This is Rouen's main theatre, offering opera, theatre and dance performances. The Victories of Classical Music took place here on 5 March 2025.
- The conservatory of Rouen: this music safe place dedicated to music, dance and theatre.



ARMADA on the dock of the Seine



Le Jardin des Plantes (Botanical Garden)



Picture credit : Alan AUBRY, Métropole Rouen Normandie

05. The defense of the social-ecological transition



The Metropole Rouen Normandie work to drive all its sectors in the direction of ecological transition. This is based on 14 criteria:





THANK YOU FOR YOUR ATTENTION!



